



CITY OF THE COLONY GPS CONTROL SHEET

ESTABLISHED BY: BRITTAIN & CRAWFORD, LLC.
LAND SURVEYING & TOPOGRAPHIC MAPPING PH. 817-926-0211

MONUMENT NAME: MONUMENT No. 5	DATE ESTABLISHED: FEBRUARY, 2009	COUNTY: DENTON	STATE: TEXAS	MAPSCO PAGE NO. 452-R
NAD-83 (CORS 96) GEODETIC POSITION LATITUDE N 033° 07' 46.46264" LONGITUDE W 096° 55' 55.55945"		NAD-83 (CORS 96) STATE PLANE COORDINATES NORTH CENTRAL ZONE (METERS) NORTHING (Y) 2163313.106 EASTING (X) 746286.827		
ELLIPSOIDAL ELEVATION (METERS) 136.979 ELLIPSOIDAL HEIGHT (METERS) -26.490		NAD-83 (CORS 96) STATE PLANE COORDINATES NORTH CENTRAL ZONE (U.S. SURVEY FEET) NORTHING (Y) 7097469.74859 EASTING (X) 2448442.69825		
AZIMUTH MARK: MON. #4 NEAR LARGE ROCK TOWER LYING S59°13'37"E 6852.07' FROM MONUMENT #5		NAVD-88 ELEV: 536.314' (U.S. SURVEY FEET)		

DESCRIPTION: 3 1/4" ALUMINUM DISK SET IN CONCRETE IN GRASSY TURN AROUND AREA IN HIDDEN COVE PARK NEAR THE CONCRETE BOAT RAMP AND RESTROOM BUILDING APPROXIMATELY 1000' SOUTHEAST OF THE OFFICE/GUARD BUILDING AT THE GATE ENTRANCE TO HIDDEN COVE PARK.

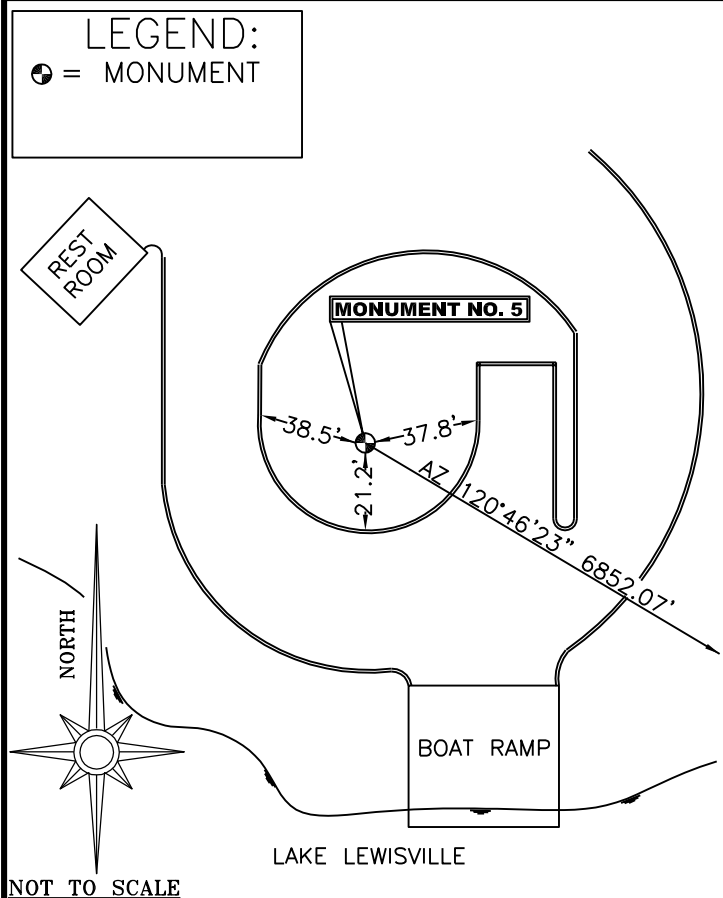


PHOTO TAKEN FROM THE SOUTH OF THE MONUMENT LOOKING NORTH TOWARDS BOAT RAMP AND LAKE.



Monument 5.txt

FILE: COL20222.090 000507859

NGS OPUS SOLUTION REPORT

All computed coordinate accuracies are listed as peak-to-peak values. For additional information: www.ngs.noaa.gov/OPUS/Using_OPUS.html#accuracy

RINEX FILE: col2022q.090 DATE: January 26, 2009 TIME: 23:33:52 UTC

SOFTWARE: page5 0810.20 master10.pl 081023 START: 2009/01/22 16:37:00
EPHEMERIS: igr15154.eph [rapid] STOP: 2009/01/22 20:38:00
NAV FILE: brdc0220.09n OBS USED: 10883 / 11407 :95%
ANT NAME: THA800961+REC NONE # FIXED AMB: 46 / 47 :98%
ARP HEIGHT: 1.35941 OVERALL RMS: 0.011(m)

REF FRAME: NAD_83(CORS96)(EPOCH:2002.0000) ITRF00 (EPOCH:2009.0597)

X: -645315.258(m) 0.023(m) -645315.963(m) 0.023(m)
Y: -5307663.834(m) 0.016(m) -5307662.412(m) 0.016(m)
Z: 3466076.649(m) 0.022(m) 3466076.480(m) 0.022(m)

LAT: 33 7 46.46264 0.011(m) 33 7 46.48158 0.011(m)
E LON: 263 4 4.44055 0.021(m) 263 4 4.40693 0.021(m)
W LON: 96 55 55.55945 0.021(m) 96 55 55.59307 0.021(m)
EL HGT: 136.979(m) 0.028(m) 135.776(m) 0.028(m)
ORTHO HGT: 163.469(m) 0.070(m) [NAVD88 (Computed using GEOID03)]

UTM COORDINATES STATE PLANE COORDINATES
UTM (Zone 14) SPC (4202 TXNC)
Northing (Y) [meters] 3667554.659 2163313.106
Easting (X) [meters] 692908.756 746286.827
Convergence [degrees] 1.13052745 0.85512398
Point Scale 1.00005885 0.99987354
Combined Factor 1.00003734 0.99985204

US NATIONAL GRID DESIGNATOR: 14SPB9290967555(NAD 83)

BASE STATIONS USED

PID DESIGNATION LATITUDE LONGITUDE DISTANCE(m)
DF8986 TXDE DENTON CORS ARP N331237.612 W0970945.970 23310.8
DF5387 TXAR ARLINGTON RRP2 CORS ARP N324532.499 W0970336.990 42807.9
DF8982 TXCO COLLIN CORS ARP N330954.927 W0963740.571 28652.9

DN0338 K 947 NEAREST NGS PUBLISHED CONTROL POINT N330918. W0965525. 2939.0

This position and the above vector components were computed without any knowledge by the National Geodetic Survey regarding the equipment or field operating procedures used.