



SEPTEMBER 28th, 2019
WINDHAVEN PKWY, AUSTIN RANCH, THE COLONY

Dear Residents and Business Owners,

We hope this letter finds you well. We are writing to inform you of the upcoming street closures and temporary traffic routes for the upcoming Red Bull Soapbox Race on September 28. On the following pages, you will find a detailed road closure and access route plan. We have worked out the plan in conjunction with the police departments from the cities of The Colony and Plano.

Residents and businesses adjacent to Windhaven Parkway, on the portion between Plano Parkway and Midway Road will be affected by the closure. Please note that all residents and businesses will have access 24hrs a day. However, some parking lots and roadways will be restricted, with alternate routes needing to be utilized. We encourage all residents and businesses to anticipate delays due to heavy traffic.

Should you have any questions, please contact your leasing office:

Thousand Oaks at Austin Ranch: phone: (972) 820-8000

Flatiron District at Austin Ranch: phone: (214) 483-6600

We apologize for the inconvenience and we thank you for your cooperation. We look forward to a having a great event in Austin Ranch. Thank you and we will see you on race day!

Sincerely,

The Red Bull Soapbox Race team



SEPTEMBER 28th, 2019
WINDHAVEN PKWY, AUSTIN RANCH, THE COLONY

Plano Residents

All Plano neighborhoods will have 24hr access. Plano residents on the north and south side of Windhaven Parkway (west of Midway Road) will be able to access their neighborhoods via Midway Road and need to use those access points.

Pointe West Residents

All Pointe West residents will receive (2) two access placards to display on your dashboards and grant you access to Windhaven Parkway through the Midway Road closure on Saturday, September 28 from 6:00am to 6:00pm. The Plano Police Department will be managing your access through this closure during this time. Also, please know you are welcome to also use the alternate routing listed below via McKamy Trail.

Plano residents on the south side of Windhaven Parkway (west of Midway Road) will have access via Midway Road and Willowdale Drive.

All residents please be sure to view the road closure schedule on pg. 4.

Plano Residents Alternate Route Map





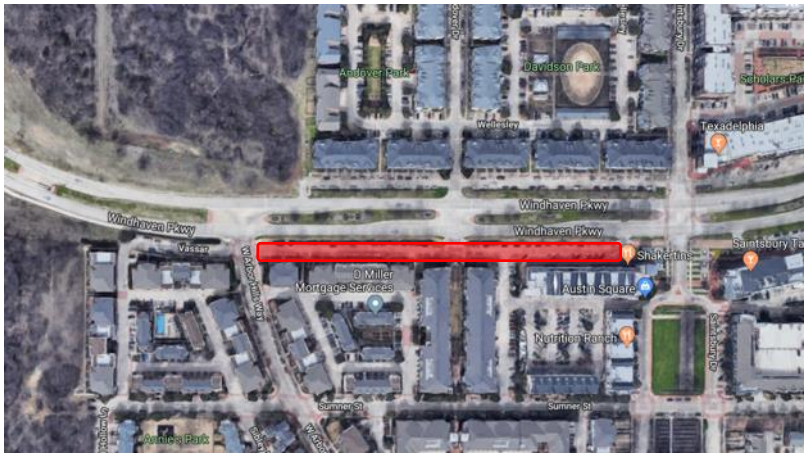
SEPTEMBER 28th, 2019
WINDHAVEN PKWY, AUSTIN RANCH, THE COLONY

Parking Lots and Rideshare Services

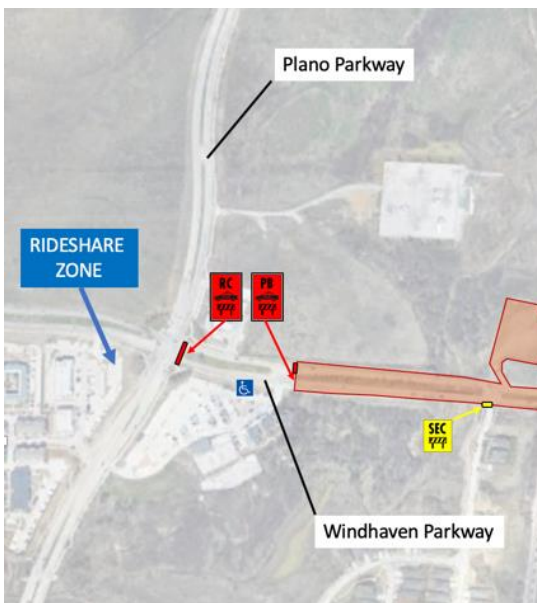
There will be no parking in the lots on the south side of Windhaven Parkway between W. Arbor Hill Way and Saintsbury Drive between Friday September 27 at 9:30am and Sunday, September 29 at 4:30pm. Please be sure not to leave any vehicles there during this time.

Rideshare services will not be able to access Thousand Oaks at Austin Ranch and Flatiron District at Austin Ranch on Saturday, September 28 from 6:00am to 6:00pm. However, you can still utilize them via the event Rideshare Zone at Plano Parkway and Windhaven Parkway.

Parking Lots Restriction Map



Rideshare Zone Map





SEPTEMBER 28th, 2019
WINDHAVEN PKWY, AUSTIN RANCH, THE COLONY

Thousand Oaks and Flatiron District Business Owners, Customers and Residents will need to use alternate access routes.

Business owners located adjacent to Windhaven Parkway between the intersections at Plano Parkway to Stag's Leap Drive, please know that the road closure schedule and alternate routes listed below will need to be utilized. Please inform all scheduled appointments in advance. All businesses and residents will need to access via McKamy Trail to Arbor Hills, as outlined below. To access the Flatiron District and Thousand Oaks, please be sure to have your ID on you.

Road Closure Schedule:

Wed, Sep 25 | Windhaven Parkway

- Westbound open
- Eastbound closed 9:30am – 4:00pm, Plano Pkwy to Saintsbury Rd

Thu, Sep 26 | Windhaven Parkway

- Eastbound open
- Westbound closed 9:30am – 9:30am Friday, (Plano Pkwy to Saintsbury Rd)

Fri, Sep 27 | Windhaven Parkway

- Eastbound and Westbound closed 9:30am – 6:00am Saturday, Plano Pkwy to Saintsbury Rd

Sat Sep 28 | Windhaven Parkway

- Eastbound and Westbound closed 6:00am to 6:00pm (Plano Pkwy to Midway Rd)
- Eastbound and Westbound closed 6:00pm to 11:59pm (Plano Pkwy to Saintsbury Rd)

Sun Sep 29 | Windhaven Parkway

- Eastbound and Westbound closed 12:00am to 4:30pm (Plano Pkwy to Saintsbury Rd)

Alternate Routing for Thousand Oaks, Flatiron District, and Austin Waters residents and businesses:

Westbound/Eastbound on Hwy-121/Sam Rayburn Tollway

North on Arbor Hills Way | Right on McKamy trail | Left on Midway Rd | Left on Spring Creek Pkwy

Northbound/Southbound on Dallas North Tollway

North on Arbor Hills Way | Right on McKamy trail | Right on Midway Rd | Left on Windhaven Pkwy

Eastbound Windhaven Pkwy Alternates

- North on Plano Pkwy | Right on Destination Rd | Right on Grandscape Blvd | Right on Spring Creek Rd | Right on Midway Rd
- South on Plano Pkwy | Left on Parker Rd | Left on Midway Rd

Austin Waters Residents:

The entrance at Walnut Creek Lane and Windhaven Parkway will be closed from Wednesday, September 25 at 9:30am to Sunday, September 29 at 4:30pm. Please use the entrance/exit at Austin Waters and Plano Parkway during this time.



SEPTEMBER 28th, 2019
WINDHAVEN PKWY, AUSTIN RANCH, THE COLONY

Businesses at the intersection of Plano Parkway and Windhaven Parkway

Businesses east of Plano Parkway:

- Windhaven Parkway entrances east of Plano Parkway will be closed from Wednesday, September 25 at 9:30am to Sunday, September 29 at 4:30pm. Please use the entrances via Plano Parkway during this time.

Businesses west of Plano Parkway:

- All entrances into your parking lots will be open at all times. However, please anticipate delays on Saturday, September 28.

Austin Ranch Alternate Routes Map:

