



CITY OF THE COLONY GPS CONTROL SHEET

ESTABLISHED BY: BRITAIN & CRAWFORD, LLC.
LAND SURVEYING & TOPOGRAPHIC MAPPING PH. 817-926-0211

MONUMENT NAME: MONUMENT No. 15	DATE ESTABLISHED: FEBRUARY, 2009	COUNTY: DENTON	STATE: TEXAS	MAPSCO PAGE NO. 554-T
-----------------------------------	-------------------------------------	-------------------	-----------------	--------------------------

NAD-83 (CORS 96) GEODETIC POSITION LATITUDE N 033° 04' 31.28369" LONGITUDE W 096° 52' 36.14312"	NAD-83 (CORS 96) STATE PLANE COORDINATES NORTH CENTRAL ZONE (METERS) NORTHING (Y) 2157380.148 EASTING (X) 751547.587
---	---

ELLIPSOIDAL ELEVATION (METERS) 154.602 ELLIPSOIDAL HEIGHT (METERS) -26.479	NAD-83 (CORS 96) STATE PLANE COORDINATES NORTH CENTRAL ZONE (U.S. SURVEY FEET) NORTHING (Y) 7078004.70222 EASTING (X) 2465702.37501
---	--

AZIMUTH MARK: CHISELED "X" IN BOX IN THE S.W. CORNER OF A 22' CURB INLET ON WEST CURB OF PAIGE ROAD, LYING S00°31'19"E 678.13' FROM MONUMENT #15	NAVD-88 ELEV: 594.096' (U.S. SURVEY FEET)
--	--

DESCRIPTION: 3 1/4" ALUMINUM DISK SET IN CONCRETE AT THE NORTHWEST CORNER OF THE INTERSECTION OF PAIGE ROAD AND MEMORIAL DRIVE 2.8' SOUTH OF THE HEADWALL/WINGWALL OF THE CULVERT STRUCTURE AND 16.4' FROM THE SOUTHEASTERLY ANGLE POINT OF THE HEADWALL NEAR PAIGE ROAD.

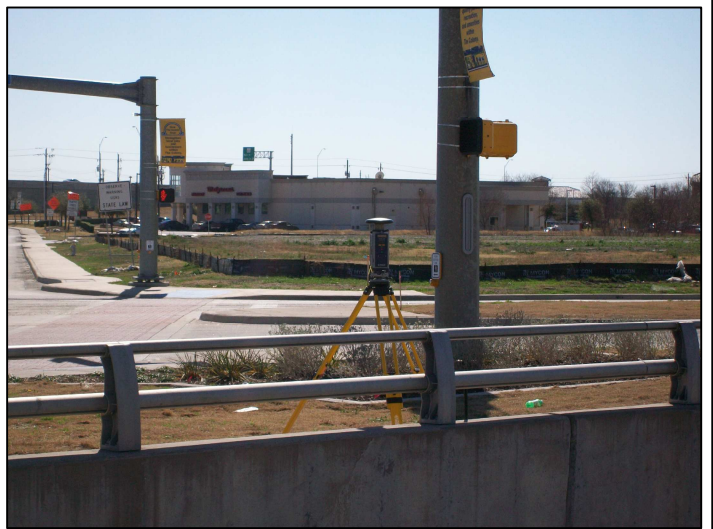
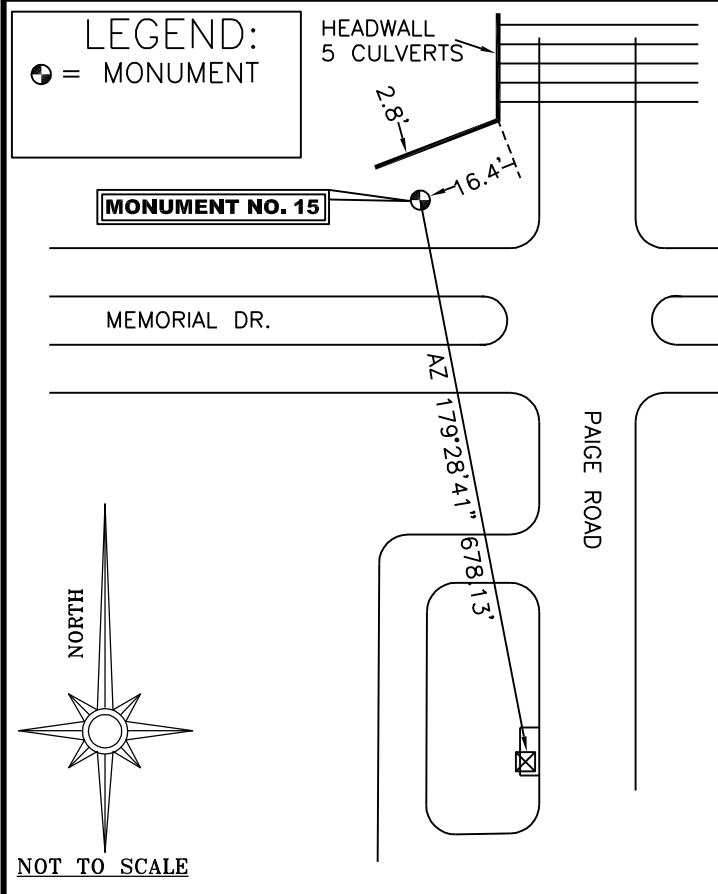


PHOTO TAKEN NORTH TO SOUTH LOOKING TOWARD MEMORIAL DRIVE



FILE: CO150352.090 000513752

NGS OPUS SOLUTION REPORT

All computed coordinate accuracies are listed as peak-to-peak values.
 For additional information: www.ngs.noaa.gov/OPUS/Using_OPUS.html#accuracy

RINEX FILE: co15035n.09o DATE: February 06, 2009
 TIME: 15:11:05 UTC

SOFTWARE: page5 0810.20 master29.pl 081023 START: 2009/02/04 13:55:00
 EPHEMERIS: igr15173.eph [rapid] STOP: 2009/02/04 17:58:00
 NAV FILE: brdc0350.09n OBS USED: 9338 / 10052 :93%
 ANT NAME: THA800961+REC NONE # FIXED AMB: 47 / 51 :92%
 ARP HEIGHT: 1.40513 OVERALL RMS: 0.013(m)

REF FRAME: NAD_83(CORS96)(EPOCH:2002.0000) ITRF00 (EPOCH:2009.0950)

X:	-640578.488(m)	0.004(m)	-640579.194(m)	0.004(m)
Y:	-5311560.243(m)	0.016(m)	-5311558.820(m)	0.016(m)
Z:	3461049.150(m)	0.009(m)	3461048.980(m)	0.009(m)

LAT:	33 4 31.28369	0.017(m)	33 4 31.30259	0.017(m)
E LON:	263 7 23.85688	0.002(m)	263 7 23.82328	0.002(m)
W LON:	96 52 36.14312	0.002(m)	96 52 36.17672	0.002(m)
EL HGT:	154.602(m)	0.008(m)	153.396(m)	0.008(m)
ORTHO HGT:	181.081(m)	0.064(m)	[NAVD88 (Computed using GEOID03)]	

	UTM COORDINATES	STATE PLANE COORDINATES
	UTM (Zone 14)	SPC (4202 TXNC)
Northing (Y) [meters]	3661645.811	2157380.148
Easting (X) [meters]	698198.942	751547.587
Convergence [degrees]	1.15914752	0.88533525
Point Scale	1.00008437	0.99987271
Combined Factor	1.00006010	0.99984844

US NATIONAL GRID DESIGNATOR: 14SPB9819961646(NAD 83)

		BASE STATIONS USED		
PID	DESIGNATION	LATITUDE	LONGITUDE	DISTANCE(m)
DF8986	TXDE DENTON CORS ARP	N331237.612	W0970945.970	30608.8
DF4385	ZFW1 FORT WORTH WAAS 1 CORS ARP	N324950.320	W0970359.262	32425.3
DF8982	TXCO COLLIN CORS ARP	N330954.927	W0963740.571	25267.8

		NEAREST NGS PUBLISHED CONTROL POINT		
PID	DESIGNATION	LATITUDE	LONGITUDE	DISTANCE(m)
DN0270	U 930	N330426.	W0965120.	1979.7

This position and the above vector components were computed without any knowledge by the National Geodetic Survey regarding the equipment or field operating procedures used.