



CITY OF THE COLONY GPS CONTROL SHEET

ESTABLISHED BY: BRITAIN & CRAWFORD, LLC.
LAND SURVEYING & TOPOGRAPHIC MAPPING PH. 817-926-0211

MONUMENT NAME: MONUMENT No. 11	DATE ESTABLISHED: FEBRUARY, 2009	COUNTY: DENTON	STATE: TEXAS	MAPSCO PAGE NO. 553-R
NAD-83 (CORS 96) GEODETIC POSITION LATITUDE N 033° 04' 49.98759" LONGITUDE W 096° 53' 39.72072"		NAD-83 (CORS 96) STATE PLANE COORDINATES NORTH CENTRAL ZONE (METERS) NORTHING (Y) 2157930.884 EASTING (X) 749890.166		
ELLIPSOIDAL ELEVATION (METERS) 151.714 ELLIPSOIDAL HEIGHT (METERS) -26.524		NAD-83 (CORS 96) STATE PLANE COORDINATES NORTH CENTRAL ZONE (U.S. SURVEY FEET) NORTHING (Y) 7079811.57525 EASTING (X) 2460264.65295		
AZIMUTH MARK: MONUMENT #10 LYING N88°29'02"W 7391.20' FROM MONUMENT #11		NAVD-88 ELEV: 584.769' (U.S. SURVEY FEET)		

DESCRIPTION: 3 1/4" ALUMINUM DISK SET IN CONCRETE 1.6' SOUTH OF THE SOUTH CURB OF SOUTH COLONY BOULEVARD, APPROXIMATELY 400' WEST OF THE CENTERLINE OF MAIN STREET (S.H. NO. 423), 103' WEST OF THE CENTERLINE OF WESTPORT AND 1.6' WEST OF A CONCRETE SIDEWALK.

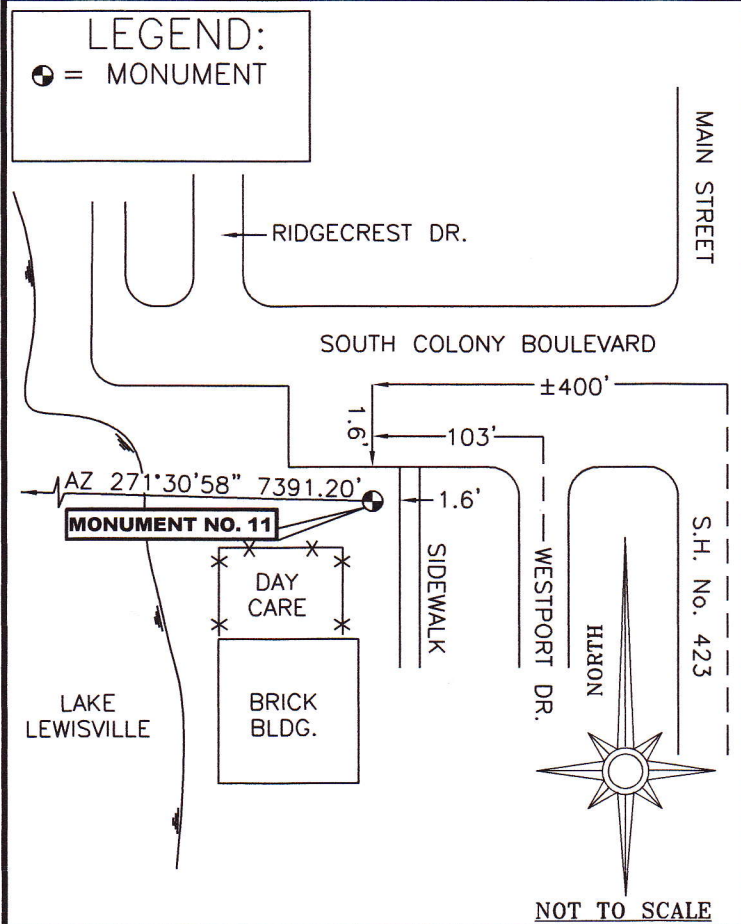


PHOTO TAKEN FROM THE WEST LOOKING EAST TOWARD MAIN ST. AND WESTPORT DR.

