



CITY OF THE COLONY GPS CONTROL SHEET

ESTABLISHED BY: BRITTAIN & CRAWFORD, LLC.
LAND SURVEYING & TOPOGRAPHIC MAPPING PH. 817-926-0211

MONUMENT NAME: MONUMENT No. 9	DATE ESTABLISHED: FEBRUARY, 2009	COUNTY: DENTON	STATE: TEXAS	MAPSCO PAGE NO. 553-H
NAD-83 (CORS 96) GEODETIC POSITION LATITUDE N 033° 05' 45.88474" LONGITUDE W 096° 53' 41.03006"		NAD-83 (CORS 96) STATE PLANE COORDINATES NORTH CENTRAL ZONE (METERS) NORTHING (Y) 2159651.982 EASTING (X) 749829.907		
ELLIPSOIDAL ELEVATION (METERS) 148.922 ELLIPSOIDAL HEIGHT (METERS) -26.485		NAD-83 (CORS 96) STATE PLANE COORDINATES NORTH CENTRAL ZONE (U.S. SURVEY FEET) NORTHING (Y) 7085458.21094 EASTING (X) 2460066.95321		
AZIMUTH MARK: CHISELED "X" IN BOX ON SOUTHEASTERLY CURB OF RESIDENTIAL SERVICE ROAD, AND IN LINE WITH CENTERLINE OF CONCRETE ALLEY BETWEEN FREEMAN DR. AND ARCHER DR. LYING S61°00'54"W 501.66' FROM #9		NAVD-88 ELEV: 575.481' (U.S. SURVEY FEET)		

DESCRIPTION: 3 1/4" ALUMINUM DISK SET IN CONCRETE AT FIRE STATION #3, 4691 NORTH COLONY BOULEVARD, 6.2' NORTH OF A BRICK SIGN AND 4.4' SOUTH OF THE SIDEWALK.

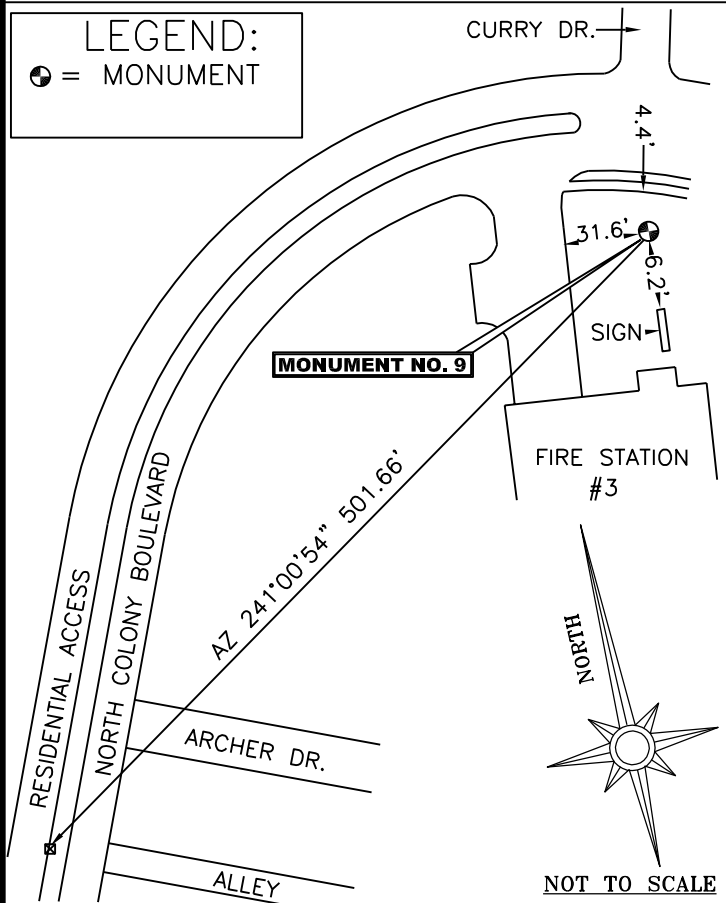


PHOTO TAKEN FROM NORTH LOOKING SOUTH TOWARDS FIRE STATION #3



Monument 9.txt

FILE: COL90364.090 000513743

2005 NOTE: The IGS precise and IGS rapid orbits were not available
 2005 at processing time. The IGS ultra-rapid orbit was/will be used to
 2005 process the data.
 2005

NGS OPUS SOLUTION REPORT

All computed coordinate accuracies are listed as peak-to-peak values.
 For additional information: www.ngs.noaa.gov/OPUS/Using_OPUS.html#accuracy

RINEX FILE: col9036r.09o DATE: February 06, 2009
 TIME: 15:02:42 UTC

SOFTWARE: page5 0810.20 master29.p] 081023 START: 2009/02/05 17:51:00
 EPHEMERIS: igu15174.eph [ultra-rapid] STOP: 2009/02/05 20:41:00
 NAV FILE: brdc0360.09n OBS USED: 7470 / 7847 :95%
 ANT NAME: THA800961+REC NONE # FIXED AMB: 44 / 47 :94%
 ARP HEIGHT: 1.472186 OVERALL RMS: 0.014(m)

REF FRAME: NAD_83(CORS96) (EPOCH:2002.0000) ITRF00 (EPOCH:2009.0981)

X:	-642098.187(m)	0.055(m)	-642098.893(m)	0.055(m)
Y:	-5310108.186(m)	0.020(m)	-5310106.764(m)	0.020(m)
Z:	3462971.696(m)	0.033(m)	3462971.526(m)	0.033(m)

LAT:	33 5 45.88474	0.031(m)	33 5 45.90363	0.031(m)
E LON:	263 6 18.96994	0.057(m)	263 6 18.93633	0.057(m)
W LON:	96 53 41.03006	0.057(m)	96 53 41.06367	0.057(m)
EL HGT:	148.922(m)	0.015(m)	147.718(m)	0.015(m)
ORTHO HGT:	175.407(m)	0.066(m)	[NAVD88 (Computed using GEOID03)]	

	UTM COORDINATES	STATE PLANE COORDINATES
	UTM (Zone 14)	SPC (4202 TXNC)
Northing (Y) [meters]	3663909.870	2159651.982
Easting (X) [meters]	696470.053	749829.907
Convergence [degrees]	1.14993944	0.87550498
Point Scale	1.00007595	0.99987292
Combined Factor	1.00005257	0.99984955

US NATIONAL GRID DESIGNATOR: 14SPB9647063910(NAD 83)

		BASE STATIONS USED		
PID	DESIGNATION	LATITUDE	LONGITUDE	DISTANCE(m)
DF8986	TXDE DENTON CORS ARP	N331237.612	W0970945.970	28039.6
DF4385	ZFW1 FORT WORTH WAAS 1 CORS ARP	N324950.320	W0970359.262	33532.2
DF8982	TXCO COLLIN CORS ARP	N330954.927	W0963740.571	26052.0

NEAREST NGS PUBLISHED CONTROL POINT			
ID	POINT	LATITUDE	DISTANCE(m)
DN0271	Z 262	N330516.	W0965124. 3668.3

This position and the above vector components were computed without any knowledge by the National Geodetic Survey regarding the equipment or field operating procedures used.